

# FAS SPrint Revolution™ SidePouch®

A PRODUCT OF AUTOMATED PACKAGING SYSTEMS



## The FAS SPrint Revolution™ — Transforming food packaging flexibility, performance and productivity

The FAS SPrint Revolution™ Bagging System brings new levels of speed and versatility to demanding packaging environments that require daily washdown procedures. Operating at speeds up to 900 inches per minute, this state-of-the-art packaging system is designed for the ultimate in bag packaging flexibility, functionality and reliability.

Engineered to satisfy high-productivity requirements, the FAS SPrint Revolution presents a conveyor of pre-opened bags that are staged for immediate loading. The 60" wide load area features a 6" pass-through, and tilts vertically for easy maintenance and sanitation. An innovative Coordinated Motion Seal Flattener is coupled with a band sealing system to ensure high quality, airtight, 3/8" bag seals. The system operates in continuous, intermittent or batch modes, and cycles on pre-set parameters, or manually with a footswitch. This highly flexible design accommodates one or more operators or infeeds and a wide variety of products and bag sizes.

An integrated Allen-Bradley® control package, featuring Kinetix® Servo motors and drives, a CompactLogix™ L45 PLC, and a large, 10" PanelView™ Plus HMI, is designed for ease of operation, serviceability, integration, and overall system reliability. Programming of all components is done with a simple flash card. The AutoTouch™ Control Software displays real time productivity data and provides easy access to job storage, job recall and on-board system diagnostics.

Genuine SidePouch® bags are system-matched for optimum performance, and offer a variety of value-added features, such as reclosable zippers, resealable flaps and tamper-evident perforations. Since the bags are pre-made, costly machine modifications are not needed to utilize these features. SidePouch bags are available in an assortment of materials that can be pre-printed in up to 10-colors with high-resolution graphics, text and bar codes for unique, attractive packaging with a competitive edge.

### User Benefits

- Operates at speeds up to 900 inches per minute (bags per minute determined by bag size)
- State-of-the-art components and operator-friendly AutoTouch™ Control Software enhance system reliability and simplify the user experience
- Highly flexible system accommodates a wide variety of loading methods, automatic infeeds, inline imprinters, products and bag sizes
- Advanced sealing system ensures consistent, high-quality, airtight bag seals
- Corrosion-resistant, stainless steel construction for daily washdown procedures
- Mounted on casters for mobility
- System-matched bags offer special features, such as reclosable zippers, resealable flaps, tamper-evident perforations and more



BPM

90

100

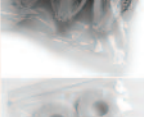
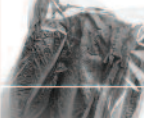
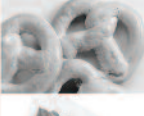
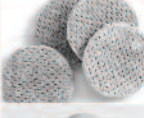
110

120

130

140

150



## Standard Features

- Adjustable, 60" load area accommodates multiple infeed configurations
- Coordinated Motion Seal Flattener and band sealer produce consistent, high quality seals
- AutoTouch™ Control Software enables easy access to job set-up and storage with advanced user access to system diagnostics
- On-board memory stores data for up to 25 jobs for easy recall
- Integrated Allen-Bradley® control package for reliability
- NEMA 4X enclosures ensure safe operation in washdown environments
- Entire system mounted on casters for mobility
- AutoThread™ feature simplifies and speeds bag changeovers
- Footswitch for manual bag indexing

## Typical Applications

- Frozen and IQF food products
- Meat, poultry, fish and meat by-products
- Fresh produce, fruits and vegetables
- Fresh and dried pastas
- Fresh and frozen snack foods
- Pet food products

A variety of configuration options are available to improve productivity for each unique application



## Mechanical Features

Band sealer and Coordinated Motion Seal Flattener combine for high quality, attractive, airtight seals



State-of-the-art controls and operator-friendly AutoTouch™ Control Software enhance system reliability and usability



## Options

- Washdown-compatible Inline Imprinter
- Product Load Table
- Product Support Conveyor
- Bag Deflation
- Nitrogen Flush Tie-in
- Additional Operator Footswitches (Up to two)
- Positive Entry Dunk Funnels
- Spare Parts Kits
- Custom Engineering & Integration Design and Support

## Technical Specifications

**Weight:** 1134 lbs. (514 kg)

**Electrical:** 110/230 VAC; 50/60 Hz; 12/6 Amps

**Air Feed:** 5 CFM/80 psi of clean, dry air

**Product Pass-Through:** Up to 6 in.

**Dimensions:**

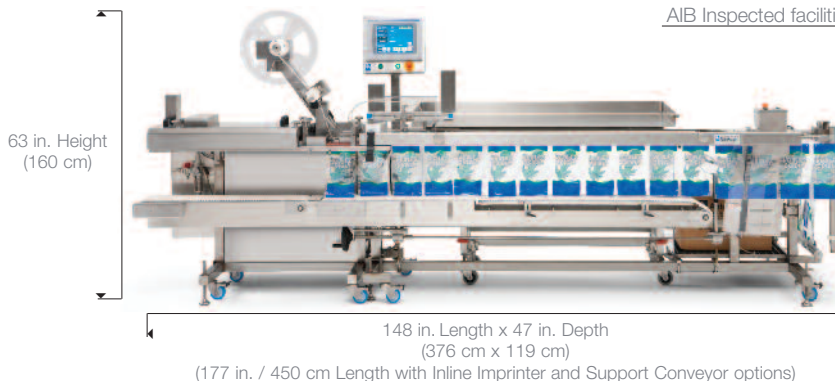
**Product Weight Capacity:** Up to 15 lbs.

(with support conveyor)

**Bag Thickness:** 1.32 to 4.0 mil

**Bag Sizes:** W 2 to 20 in. L 3 to 18.75 in.

**Approvals:** USDA Accepted;  
AIB Inspected facilities



Tilting load area accommodates multiple infeed configurations and simplifies daily washdown



Automated Packaging Systems Inc.  
 10175 Philipp Parkway  
 Streetsboro, Ohio 44241  
 Tel: 888-288-6224  
 Fax: 330-342-2400

The use of the ® or ™ symbol indicates that Automated Packaging Systems, Inc. has registered or is otherwise claiming trademark rights in the United States. These marks may also be registered in other countries and common law rights may apply in countries where such rights are recognized.

machines

materials

service

s y s t e m s   a d v a n t a g e